



PRICE LIST

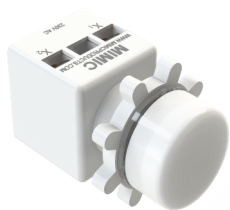
1st June 2026

**Manufactured by:-
Steam Airetric Controls**

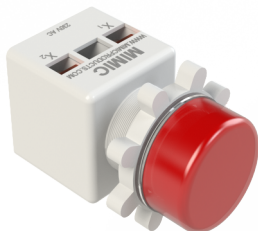
Electrical Switchgear

Sr. No.	Name of Product	Code No. SKU	Least Price	
1.	MIMIC, LED Indicating Lamp, Spark glow (old name : Economy AC)	L 1	150/-	<ul style="list-style-type: none"> ● Available colors: Red, Green, Amber, Blue, White. ● Available voltages: 12V, 24V, 30V, 48V, 110V, 220V, 230V, 250V, 415V, 450V, 650V, 800 VAC, DC, AC/DC. <p>Least Price plus Courier plus 18% = MRP</p>
2.	MIMIC, LED Indicating Lamp, High bright (old name : Standard AC)	L 2	150/-	
3.	MIMIC, LED Indicating Lamp, Legend	L 3	175/-	
4.	MIMIC, LED Indicating Lamp, standard, 415VAC	L 4	350/-	
5.	MIMIC, LED Indicating Lamp, standard, 450VDC	L 5	350/-	
6.	MIMIC, LED Indicating Lamp, standard, 650VDC	L 6	550/-	
7.	MIMIC, LED Indicating Lamp, standard, 800V AC/DC	L 7	1200/-	
8.	MIMIC, LED Indicating Lamp, Legend RYB set	L 8	520/-	
9.	MIMIC, LED Indicating Lamp, Legend ON, Red	L 9	175/-	
10.	MIMIC, LED Indicating Lamp, Legend OFF, Green	L 10	175/-	
11.	MIMIC, LED Indicating Lamp, Legend, customised	L 11	200/-	
12.	MIMIC, LED Indicating Lamp, Bicolour	L 12	200/-	
13.	MIMIC, LED Indicating Lamp, 16.5 mm cutout, bicolour	L 13	200/-	
14.	MIMIC, LED Indicating Lamp, weather protection IP 68 Epoxy encapsulated	L 14	700/-	

**Manufactured by:-
Steam Airetric Controls**



Indicating Lamp : Bicolour
● Saves space & cost



Indicating Lamp : High Bright
● Equal glow 180°



Indicating Lamp : Legend
● Actual letters glow

Electrical Switchgear

Sr. No.	Name of Product	Code No. SKU	Least Price
1	MIMIC, Annunciation window, 30 x 30 mm, 22.5 mm cutout, 24VDC, Red	W1	225/-
2	MIMIC, Annunciation window, 30 x 30 mm, 22.5 mm cutout, 110 VDC, Red	W2	225/-
3	MIMIC, Annunciation window, 30 x 30 mm, 22.5 mm cutout, 230VAC, Red	W3	225/-
4	MIMIC, Annunciation window, 30 x 40 mm, 22.5 mm cutout, 24VDC, Red	W4	225/-
5	MIMIC, Annunciation window, 30 x 40 mm, 22.5 mm cutout, 110 VDC, Red	W5	225/-
6	MIMIC, Annunciation window, 30 x 40mm, 22.5 mm cutout, 230VAC, Red	W6	225/-
7	MIMIC, Annunciation window, 30 x 60 mm, 22.5 mm cutout, 24VDC, Red	W7	350/-
8	MIMIC, Annunciation window, 30 x 60 mm, 22.5 mm cutout, 230VAC, Red	W8	350/-
9	MIMIC, Annunciation window, 60 x 60 mm, 22.5 mm cutout, 24VDC	W9	400/-
10	MIMIC, Annunciation window, 60 x 60 mm, 22.5 mm cutout, 230VC	W10	400/-
11	MIMIC, Annunciation window, 30 x 40 mm, 22.5 mm cutout, 24 VDC, Red Flasher	W11	450/-
12	MIMIC, Annunciation window, 30 x 40 mm, 22.5 mm cutout, 110VDC, Red Flasher	W12	450/-
13	MIMIC, Annunciation window, 30 x 40 mm, 22.5 mm cutout, 230VAC, Red Flasher	W13	450/-
14	MIMIC, Annunciation window, 30 x 60 mm, 22.5 mm cutout, 24 VDC, Red Flasher	W14	500/-
15	MIMIC, Annunciation window, 30 x 60 mm, 22.5 mm cutout, Red Flasher 110VDC	W15	500/-
16	MIMIC, Annunciation window, 30 x 60 mm, 22.5 mm cutout, Flasher 230VAC, Red	W16	500/-
17	MIMIC, Annunciation window, 30 x 60 mm, 22.5 mm cutout, Flasher 110VDC, Amber	W17	500/-
18	MIMIC, Annunciation window, 30 x 60 mm, 22.5 mm cutout, Flasher 230VAC, Amber	W18	500/-

Least Price plus Courier plus 18% = MRP



Bezel : 30 x 30 mm



Bezel : 30 x 40 mm



Bezel : 30 x 60 mm



Bezel : 60 x 60 mm

1. Add suffix G,A,B,W for Green, Amber, Blue, White. No need to add suffix for Red.
2. Film: Free with window prior to dispatch, courier charge Rs.40/- will be added if sent after dispatch, of window.
3. Type of Legend
 - a. Film negative type, background black, letters color glow, material plastic.
 - b. Film Positive type, background white, letters black.

**Manufactured by:-
Steam Airetric Controls**

Electrical Switchgear

Sr. No.	Name of Product	Code No. SKU	Least Price	
1	MIMIC Buzzer cum Flasher, 230VAC	BZ 1	490/-	Least Price plus Courier plus 18% = MRP
2	MIMIC Buzzer cum Flasher, 24VDC	BZ 2	490/-	
3	MIMIC Buzzer cum Flasher, 12-24V AC/DC	BZ 3	490/-	
4	MIMIC Buzzer cum Flasher, 12VDC	BZ 4	490/-	
5	MIMIC Buzzer cum Flasher, 110VDC, 220 VDC	BZ 5	490/-	
6	MIMIC Continuous Buzzer Indicator 24VDC	BZ 6	530/-	
7	MIMIC Continuous Buzzer Indicator 12-24VDC	BZ 7	530/-	
8	MIMIC Continuous Buzzer Indicator 220VDC	BZ 8	530/-	
9	MIMIC Continuous Buzzer Indicator 230 VAC	BZ 9	530/-	



Buzzer cum Flasher



Continuous Buzzer

**Manufactured by:-
Steam Airetric Controls**



Price List 1st June 2026

Semaphore Indicator “SP”

Electrical Switchgear

Sr. No.	Name of Product	SKU	Code No.	Least Price
1	MIMIC LED Semaphore Indicator 22.5 Cutout Voltage 24 VDC - Round	SP 1	MIMIC-SP-22-24-DC-RB	1600/-
2	MIMIC LED Semaphore Indicator 22.5 Cutout Voltage 48 VDC - Round	SP 2	MIMIC-SP-22-48-DC-RB	1600/-
3	MIMIC LED Semaphore Indicator 22.5 Cutout Voltage 110 VDC - Round	SP 3	MIMIC-SP-22-110-DC-RB	1600/-
4	MIMIC LED Semaphore Indicator 22.5 Cutout Voltage 125 VDC - Round	SP 4	MIMIC-SP-22-125-DC-RB	1600/-
5	MIMIC LED Semaphore Indicator 22.5 Cutout Voltage 220 VDC - Round	SP 5	MIMIC-SP-22-220-DC-RB	1600/-
6	MIMIC LED Semaphore Indicator 22.5 Cutout Voltage 250 VDC - Round	SP 6	MIMIC-SP-22-250-DC-RB	1600/-
7	MIMIC LED Semaphore Indicator 22.5 Cutout Voltage 24 VDC - Square	SP 7	MIMIC-SP-22-24-DC-SQ	1700/-
8	MIMIC LED Semaphore Indicator 22.5 Cutout Voltage 48 VDC -Square	SP 8	MIMIC-SP-22-48-DC-SQ	1700/-
9	MIMIC LED Semaphore Indicator 22.5 Cutout Voltage 110 VDC - Square	SP 9	MIMIC-SP-22-110-DC-SQ	1700/-
10	MIMIC LED Semaphore Indicator 22.5 Cutout Voltage 125 VDC - Square	SP 10	MIMIC-SP-22-125-DC-SQ	1700/-
11	MIMIC LED Semaphore Indicator 22.5 Cutout Voltage 220 VDC - Square	SP 11	MIMIC-SP-22-220-DC-SQ	1700/-
12	MIMIC LED Semaphore Indicator 22.5 Cutout Voltage 250 VDC - Square	SP 12	MIMIC-SP-22-250-DC-SQ	1700/-
13	MIMIC LED Semaphore Indicator 22.5 Cutout Voltage 24 VDC - Round with Test function	SP 13	MIMIC-SP-22-24-DC-RB-T	1800/-
14	MIMIC LED Semaphore Indicator 22.5 Cutout Voltage 48 VDC - Round with Test function	SP 14	MIMIC-SP-22-48-DC-RB-T	1800/-
15	MIMIC LED Semaphore Indicator 22.5 Cutout Voltage 110 VDC - Round with Test function	SP 15	MIMIC-SP-22-110-DC-RB-T	1800/-
16	MIMIC LED Semaphore Indicator 22.5 Cutout Voltage 125 VDC - Round with Test function	SP 16	MIMIC-SP-22-125-DC-RB-T	1800/-
17	MIMIC LED Semaphore Indicator 22.5 Cutout Voltage 220 VDC - Round with Test function	SP 17	MIMIC-SP-22-220-DC-RB-T	1800/-
18	MIMIC LED Semaphore Indicator 22.5 Cutout Voltage 250 VDC - Round with Test function	SP 18	MIMIC-SP-22-250-DC-RB-T	1800/-
19	MIMIC LED Semaphore Indicator 22.5 Cutout Voltage 24 VDC - Square with Test function	SP 19	MIMIC-SP-22-24-DC-SQ-T	1860/-
20	MIMIC LED Semaphore Indicator 22.5 Cutout Voltage 48 VDC - Square with Test function	SP 20	MIMIC-SP-22-48-DC-SQ-T	1860/-
21	MIMIC LED Semaphore Indicator 22.5 Cutout Voltage 110 VDC - Square with Test function	SP 21	MIMIC-SP-22-110-DC-SQ-T	1860/-
22	MIMIC LED Semaphore Indicator 22.5 Cutout Voltage 125 VDC - Square with Test function	SP 22	MIMIC-SP-22-125-DC-SQ-T	1860/-
23	MIMIC LED Semaphore Indicator 22.5 Cutout Voltage 220 VDC - Square with Test function	SP 23	MIMIC-SP-22-220-DC-SQ-T	1860/-
24	MIMIC LED Semaphore Indicator 22.5 Cutout Voltage 250 VDC - Square with Test function	SP 24	MIMIC-SP-22-250-DC-SQ-T	1860/-
25	MIMIC LED Semaphore Indicator 30.5 Cutout Voltage 24 VDC - Round	SP 25	MIMIC-SP-30-24-DC-RB	1800/-
26	MIMIC LED Semaphore Indicator 30.5 Cutout Voltage 48 VDC - Round	SP 26	MIMIC-SP-30-48-DC-RB	1800/-
27	MIMIC LED Semaphore Indicator 30.5 Cutout Voltage 110 VDC - Round	SP 27	MIMIC-SP-30-110-DC-RB	1800/-



Price List 1st June 2026

Semaphore Indicator "SP"

Electrical Switchgear

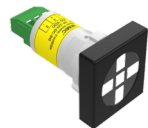
Sr. No.	Name of Product	SKU	Code No.	Least Price
28	MIMIC LED Semaphore Indicator 30.5 Cutout Voltage 125 VDC - Round	SP 28	MIMIC-SP-30-125-DC-RB	1800/-
29	MIMIC LED Semaphore Indicator 30.5 Cutout Voltage 220 VDC - Round	SP 29	MIMIC-SP-30-220-DC-RB	1800/-
30	MIMIC LED Semaphore Indicator 30.5 Cutout Voltage 250 VDC - Round	SP 30	MIMIC-SP-30-250-DC-RB	1800/-
31	MIMIC LED Semaphore Indicator 43 Cutout Voltage 24 VDC - Round	SP 31	MIMIC-SP-43-24-DC-RB	1850/-
32	MIMIC LED Semaphore Indicator 43 Cutout Voltage 48 VDC - Round	SP 32	MIMIC-SP-43-48-DC-RB	1850/-
33	MIMIC LED Semaphore Indicator 43 Cutout Voltage 110 VDC - Round	SP 33	MIMIC-SP-43-110-DC-RB	1850/-
34	MIMIC LED Semaphore Indicator 43 Cutout Voltage 125 VDC - Round	SP 34	MIMIC-SP-43-125-DC-RB	1850/-
35	MIMIC LED Semaphore Indicator 43 Cutout Voltage 220 VDC - Round	SP 35	MIMIC-SP-43-220-DC-RB	1850/-
36	MIMIC LED Semaphore Indicator 43 Cutout Voltage 250 VDC - Round	SP 36	MIMIC-SP-43-250-DC-RB	1850/-
37	MIMIC LED Semaphore Indicator 72 Cutout Voltage 24 VDC - Round	SP 37	MIMIC-SP-72-24-DC-RB	2250/-
38	MIMIC LED Semaphore Indicator 72 Cutout Voltage 48 VDC - Round	SP 38	MIMIC-SP-72-48-DC-RB	2250/-
39	MIMIC LED Semaphore Indicator 72 Cutout Voltage 110 VDC - Round	SP 39	MIMIC-SP-72-110-DC-RB	2250/-
40	MIMIC LED Semaphore Indicator 72 Cutout Voltage 125 VDC - Round	SP 40	MIMIC-SP-72-125-DC-RB	2250/-
41	MIMIC LED Semaphore Indicator 72 Cutout Voltage 220 VDC - Round	SP 41	MIMIC-SP-72-220-DC-RB	2250/-
42	MIMIC LED Semaphore Indicator 72 Cutout Voltage 250 VDC - Round	SP 42	MIMIC-SP-72-250-DC-RB	2250/-

Least Price plus Courier plus 18% = MRP

Manufactured by:-
Steam Airetric Controls



Cutout : 22.5 mm



Cutout : 22.5 mm



Cutout : 30.5 mm



Test Type

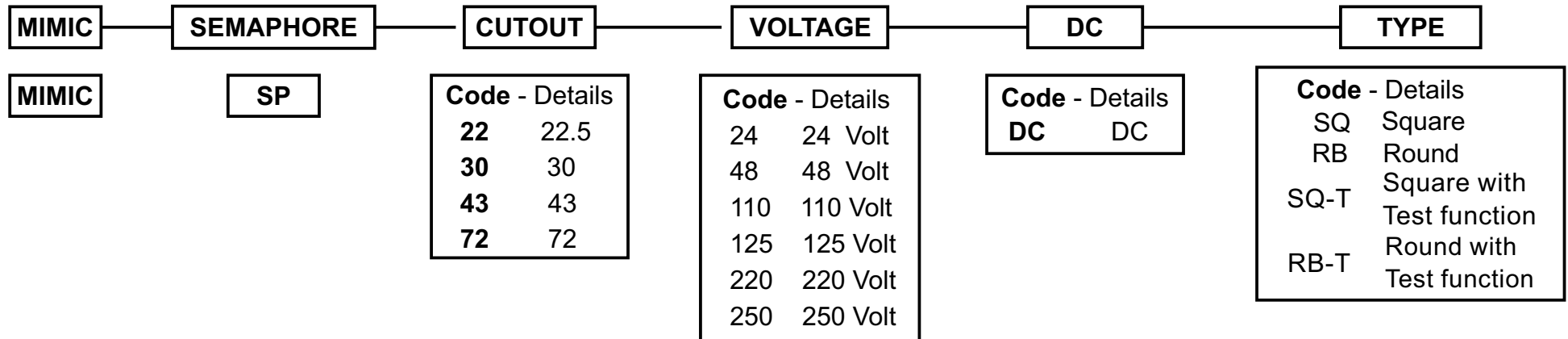


Cutout : 43 mm



Cutout : 72 mm

Electrical Switchgear



Electrical Switchgear

Sr. No.	Name of Product	SKU	Code No.	Least Price
1.	MIMIC Tower Lamp / 12V/DC / Red / Steady / Single Tier /Base Mounting	T 1	M-T-12-D-R-ST-1-B	475/-
2.	MIMIC Tower Lamp / 230V/AC / Red / Steady / Single Tier /Base Mounting	T 2	M-T-23-A-R-ST-1-B	475/-
3.	MIMIC Tower Lamp / 24V/DC / Red / Steady / Single Tier /Base Mounting	T 3	M-T-24-D-R-ST-1-B	475/-
4.	MIMIC Tower Lamp / 12V/ DC / Red / Steady / Single Tier /Panel Mounting	T 4	M-T-12-D-R-ST-1-P	475/-
5.	MIMIC Tower Lamp / 230V/ AC / Red / Steady / Single Tier /Panel Mounting	T 5	M-T-23-A-R-ST-1-P	475/-
6.	MIMIC Tower Lamp / 24V/ DC / Red / Steady / Single Tier /Panel Mounting	T 6	M-T-24-D-R-ST-1-P	475/-
7.	MIMIC Tower Lamp / 12V/ DC / Red Buzzer Flasher / Single Tier / Base Mounting	T 7	M-T-12-D-RBF-1-B	770/-
8.	MIMIC Tower Lamp /230V/ AC / Red Buzzer Flasher / Single Tier / Base Mounting	T 8	M-T-23-A-RBF-1-B	770/-
9.	MIMIC Tower Lamp / 24V/ DC / Red Buzzer Flasher / Single Tier / Base Mounting	T 9	M-T-24-D-RBF-1-B	770/-
10.	MIMIC Tower Lamp / 12V/ DC / Red Buzzer Flasher/ Single Tier / Panel Mounting	T 10	M-T-12-D-RBF-1-P	770/-
11.	MIMIC Tower Lamp /230V/ AC / Red Buzzer Flasher/ Single Tier / Panel Mounting	T 11	M-T-23-A-RBF-1-P	770/-
12.	MIMIC Tower Lamp / 24V/ DC / Red Buzzer Flasher/ Single Tier / Panel Mounting	T 12	M-T-24-D-RBF-1-P	770/-
13.	MIMIC Tower Lamp / 12V/ DC / Red Buzzer Flasher / Green / Two Tier / Base Mounting	T 13	M-T-12-D-RBF-G-2-B	968/-
14.	MIMIC Tower Lamp /230V/ AC / Red Buzzer Flasher / Green / Two Tier / Base Mounting	T 14	M-T-23-A-RBF-G-2-B	968/-
15.	MIMIC Tower Lamp / 24V/ DC / Red Buzzer Flasher / Green / Two Tier / Base Mounting	T 15	M-T-24-D-RBF-G-2-B	968/-
16.	MIMIC Tower Lamp / 12V/ DC / Red Buzzer Flasher / Green / Two Tier / Panel Mounting	T 16	M-T-12-D-RBF-G-2-P	968/-
17.	MIMIC Tower Lamp / 230V/AC / Red Buzzer Flasher / Green / Two Tier / Panel Mounting	T 17	M-T-23-A-RBF-G-2-P	968/-
18.	MIMIC Tower Lamp / 24V/ DC / Red Buzzer Flasher / Green / Two Tier / Panel Mounting	T 18	M-T-24-D-RBF-G-2-P	968/-
19.	MIMIC Tower Lamp / 12V/ DC / Red Steady / Green Steady / Two Tier / Base Mounting	T 19	M-T-12-D-RST-GST-2-B	670/-
20.	MIMIC Tower Lamp /230V/ AC / Red Steady / Green Steady / Two Tier / Base Mounting	T 20	M-T-23-A-RST-GST-2-B	670/-
21.	MIMIC Tower Lamp / 24V/ DC / Red Steady / Green Steady / Two Tier / Base Mounting	T 21	M-T-24-D-RST-GST-2-B	670/-
22.	MIMIC Tower Lamp / 12V/ DC / Red Steady / Green Steady / Two Tier / Panel Mounting	T 22	M-T-12-D-RST-GST-2-P	670/-
23.	MIMIC Tower Lamp /230V/ AC / Red Steady / Green Steady / Two Tier / Panel Mounting	T 23	M-T-23-A-RST-GST-2-P	670/-
24.	MIMIC Tower Lamp / 24V/ DC / Red Steady / Green Steady / Two Tier / Panel Mounting	T 24	M-T-24-D-RST-GST-2-P	670/-
25.	MIMIC Tower Lamp / 12V/DC / Red Buzzer Flasher/ Green Steady / Amber Steady / Three Tier / Base Mounting	T 25	M-T-12-D-RBF-GST-AST-3-B	1067/-
26.	MIMIC Tower Lamp / 230V/ AC / Red Buzzer Flasher / Green Steady / Amber Steady / Three Tier / Base Mounting	T 26	M-T-23-A-RBF-GST-AST-3-B	1067/-

Electrical Switchgear

Sr. No.	Name of Product	SKU	Code No.	Least Price
27	MIMIC Tower Lamp / 24V/DC / Red Buzzer Flasher/ Green Steady / Amber Steady / Three Tier / Base Mounting	T 27	M-T-24-D-RBF-GST-AST-3-B	1067/-
28	MIMIC Tower Lamp / 12V/DC / Red Buzzer Flasher/ Green Steady / Amber Steady / Three Tier / Panel Mounting	T 28	M-T-12-D-RBF-GST-AST-3-P	1067/-
29	MIMIC Tower Lamp / 230V/ AC / Red Buzzer Flasher/ Green Steady / Amber Steady / Three Tier / Panel Mounting	T 29	M-T-23-A-RBF-GST-AST-3-P	1067/-
30	MIMIC Tower Lamp / 24V/DC / Red Buzzer Flasher/ Green Steady / Amber Steady / Three Tier / Panel Mounting	T 30	M-T-24-D-RBF-GST-AST-3-P	1067/-
31	MIMIC Tower Lamp / 12V/ DC / Red Steady / Green Steady / Amber Steady / Three Tier / Base Mounting	T 31	M-T-12-D-RST-GST-AST-3-B	870/-
32	MIMIC Tower Lamp / 230V/ AC / Red Steady / Green Steady / Amber Steady / Three Tier / Base Mounting	T 32	M-T-23-A-RST-GST-AST-3-B	870/-
33	MIMIC Tower Lamp / 24V/DC / Red Steady / Green Steady / Amber Steady / Three Tier / Base Mounting	T 33	M-T-24-D-RST-GST-AST-3-B	870/-
34	MIMIC Tower Lamp / 12V/DC / Red Steady / Green Steady / Amber Steady / Three Tier / Panel Mounting	T 34	M-T-12-D-RST-GST-AST-3-P	870/-
35	MIMIC Tower Lamp / 230V/AC / Red Steady / Green Steady / Amber Steady / Three Tier / Panel Mounting	T 35	M-T-23-A-RST-GST-AST-3-P	870/-
36	MIMIC Tower Lamp / 24V/DC / Red Steady / Green Steady / Amber Steady / Three Tier / Panel Mounting	T 36	M-T-24-D-RST-GST-AST-3-P	870/-
37	MIMIC Tower Lamp / 12V/DC / Red Steady / Green Steady / Amber Steady / Blue Steady Four Tier / Base Mounting	T 37	M-T-12-D-RST-GST-AST-BST-4-B	1345/-
38	MIMIC Tower Lamp / 230V/AC / Red Steady / Green Steady / Amber Steady / Blue Steady Four Tier / Base Mounting	T 38	M-T-23-A-RST-GST-AST-BST-4-B	1345/-
39	MIMIC Tower Lamp / 24V/DC / Red Steady / Green Steady / Amber Steady / Blue Steady Four Tier / Base Mounting	T 39	M-T-24-D-RST-GST-AST-BST-4-B	1345/-

Electrical Switchgear

Least Price plus Courier plus 18% = MRP

Manufactured by:-
Steam Airetric Controls



Base Mounting Single Tier Steady Panel Mounting Single Tier Steady Base Mounting Single Tier Buzzer + Flasher Panel Mounting Single Tier Buzzer + Flasher Base Mounting Two Tier Buzzer + Flasher Panel Mounting Two Tier Buzzer + Flasher Base Mounting Two Tier steady Panel Mounting Two Tier steady Base Mounting Three Tier Buzzer + Flasher Panel Mounting Three Tier Buzzer + Flasher Base Mounting Three Tier steady Panel Mounting Three Tier steady Base Mounting Four Tier steady

MIMIC	TOWER LAMP	VOLTAGE	AC/DC	COLOR	TYPE	TIER	MOUNTING
M	T	Code - Details 12 12 Volt 24 24 Volt 48 48 Volt 11 110 Volt 23 230 Volt	Code - Details A AC D DC	Code - Details R Red G Green A Amber B Blue W White	Code - Details ST Steady FL Flashing BF Buzzer cum flasher	Code - Details 1 1 Tier 2 2 Tier 3 3 Tier 4 4 Tier	Code - Details B Base Mounting P Panel Mounting

Electrical Switchgear

Sr. No.	Name of Product	Code No. SKU	Least Price	
1.	MIMIC GN0-24VDC	H 1	520/-	Least Price plus Courier plus 18% = MRP
2.	MIMIC GN0-230VAC	H 2	520/-	
3.	MIMIC EN3 3 Tone 24VDC	H 3	1075/-	
4.	MIMIC EN3, 3 Tone 230VAC	H 4	1075/-	
Electronic Hooter, 22.5mm, m series				
1.	MIMIC Hooter 230VAC	H 5	507/-	
2.	MIMIC Hooter 24VDC	H 6	507/-	
3.	MIMIC Ringer 230VAC	H 7	507/-	
4.	MIMIC Ringer 110VDC	H 8	507/-	
5.	MIMIC Ringer 220VDC	H 9	507/-	
6.	MIMIC Buzzer + Flasher 230VAC	H 10	1160/-	
7.	MIMIC Buzzer + Flasher 24VAC/DC	H 11	1160/-	
8.	MIMIC Buzzer cum Flasher with audio accept 230VAC	H 12	1210/-	
9.	MIMIC Buzzer cum Flasher with audio accept 24VAC/DC	H 13	1210/-	

**Manufactured by:-
Steam Airetric Controls**



Hooter - GNO



Hooter - En3



Hooter / Buzzer / Ringer



Hooter / Buzzer / Flasher

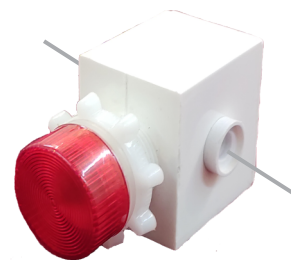
Electrical Switchgear

Sr. No.	Name of Product	Code No. SKU	Least Price
1.	No current No indication	HFAIL 1	770/-
2.	No current Yes indication with buzzer with relay O/P with timer	HFAIL 2	1850/-
3.	Heater Group one coil failure	HFAIL 3	4500/-

Least Price plus Courier plus 18% = MRP



No current Yes indication with buzzer with relay O/P



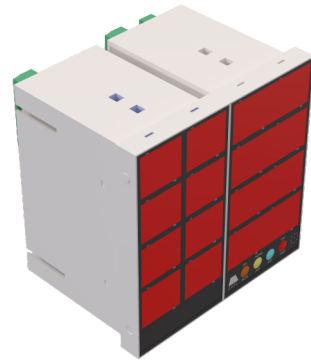
No current No indication

**Manufactured by:-
Steam Airetric Controls**

Electrical Switchgear

Sr. No.	Name of Product	Code No. SKU	Least Price
1.	MIMIC Annunciation System 4 Point	AS 1	4000/-
2.	MIMIC Annunciation System 8 Point	AS 2	8000/-
3.	MIMIC Annunciation System 16 Point	AS 3	16000/-
4.	MIMIC Annunciation System 32 Point	AS 4	32000/-

Least Price plus Courier plus 18% = MRP



MIMIC Annunciation System

**Manufactured by:-
Steam Airetric Controls**

Maintenance

Sr. No.	Name of Product	Code No. SKU	Least Price	
1.	Hand lamp sparrow, 24VAC, 14 Watt	HL 1	1045/-	Least Price plus Courier plus 18% = MRP
2.	Hand lamp sparrow, 24VDC, 14 Watt	HL 2	1045/-	
3.	Hand lamp, sparrow, Rechargeable, 7 Watt	HL 3	2750/-	
4.	Hand lamp, sparrow, with power supply	HL 4	3800/-	
5.	Hand lamp, sparrow, with power bank	HL 5	3800/-	
6.	Hand lamp, Eagle, 36 watt, 24VAC	HL 6	3960/-	
7.	Hand lamp, Eagle, 36 watt, 24VDC	HL 7	3960/-	
8.	Hand lamp, Eagle, 36 watt, 24VAC with transformer	HL 8	7200/-	
9.	Hand lamp sparrow, 24VDC, 14 watt with male-female socket & 2 meter cable	HL 9	2000/-	
10	Sparrow 28 watt, 24VAC	HL 10	3000/-	



Sparrow - Rechargeable 7W



Sparrow - 14W



Sparrow-14 W with transformer



Eagle-Rechargeable 12 W



Eagle- 36 W



Eagle- 36W with transformer

**Manufactured by:-
Steam Airetric Controls**

Maintenance


Sr. No.	Name of Product	Code No. SKU	Least Price	
1.	LED Rechargeable Flood light 30 watt, 2 hour backup	FLRE 1	8250/-	Least Price plus Courier plus 18% = MRP
2.	LED Rechargeable Flood light 40 watt, 2 hour backup	FLRE 2	10550/-	
3.	LED Rechargeable Flood light 50 watt, 2 hour backup	FLRE 3	11550/-	
4.	LED Rechargeable Flood light 60 watt, 2 hour backup	FLRE 4	12550/-	
5.	LED Rechargeable Flood light 100 watt, 2 hour backup	FLRE 5	21000/-	
6.	LED Rechargeable Flood light 30 watt, 4 hour backup	FLRE 6	11250/-	
7.	LED Rechargeable Flood light 40 watt, 4hour backup	FLRE 7	13550/-	
8.	LED Rechargeable Flood light 50 watt, 4hour backup	FLRE 8	14550/-	
9.	LED Rechargeable Flood light 60 watt, 4 hour backup	FLRE 9	16550/-	
10.	LED Rechargeable Flood light 100 watt, 4 hour backup	FLRE 10	34000/-	
11.	LED Rechargeable Floodlight 100 watt with 8 hour backup	FLRE 11	68000/-	

**Manufactured by:-
Steam Airetric Controls**




LED Rechargeable Floodlight

Maintenance

Sr. No.	Name of Product	Code No. SKU	Least Price	
1.	Hands free lighting jacket	JK 1	4000/-	Least Price plus Courier plus 18% = MRP
 <p data-bbox="753 1435 1058 1463">Hands free lighting jacket</p>				Manufactured by:- Steam Airetric Controls

Maintenance

Sr. No.	Name of Product	Code No. SKU	Least Price	
1.	Helmet lamp	HELL	1375/-	Least Price plus Courier plus 18% = MRP
 <p data-bbox="810 1377 966 1406">Helmet lamp</p>				Manufactured by:- Steam Airetric Controls


Safety & Warning Products

Sr. No.	Name of Product	Code No. SKU	Least Price
1.	Electronic siren 230VAC	SI 1	13000/-
2.	Electronic siren 24VAC/DC	SI 2	13000/-
3.	Electronic siren 110VAC	SI 3	13000/-
4.	Fault Announcer	SI 4	5500/-
5.	Tea, Lunch Automatic Electronic Siren	SI 5	12500/-


Least Price plus Courier plus 18% = MRP

**Manufactured by:-
Steam Airetric Controls**

Safety & Warning Products

Sr. No.	Name of Product	Code No. SKU	Least Price	
1.	Portable siren with flasher	SIPO 1	4730/-	Least Price plus Courier plus 18% = MRP
 <p data-bbox="821 1409 1131 1438">Portable siren with flasher</p>				Manufactured by:- Steam Airetric Controls

Safety & Warning Products

Sr. No.	Name of Product	Code No. SKU	Least Price	
1.	Shutter Motion Hooter	MOH 1	3300/-	Least Price plus Courier plus 18% = MRP
 <p data-bbox="748 1414 1012 1438">Shutter Motion Hooter</p>				Manufactured by:- Steam Airetric Controls

Audio Visual Alarms

Sr. No.	Name of Product	Code No. SKU	Least Price
1.	IP66, 1 Tier, Hooter + Flasher 230VAC with Junction Box JB	AV 1	8900/-
2.	IP66, 2 Tier, Hooter + Flasher Red Flashing, Amber Flashing, With Junction Box	AV 2	10100/-
3.	Sounder + strobe IP 66, Metal Body, Heavy Duty	AV 3	7150/-
4.	IP66 Hooter cum Flasher	AV 4	2200/-
5.	IP54 Hooter cum Flasher	AV 5	1200/-
6.	Audio visual alarm	AV 6	10000/-
7.	4 Tone Sounder, IP 66, Metal Body, 24VDC, 230VAC, 110VAC	AV 7	4950/-

Least Price plus Courier plus 18% = MRP



IP 66 Hooter + Flasher
1 Tier



IP 66 Hooter + Flasher
2 Tier



4 Tone Sounder



Sounder + Strobe



IP 54



IP 66



Audio Visual alarm

**Manufactured by:-
Steam Airetric Controls**

DC Lighting

Sr. No.	Name of Product	Code No. SKU	Least Price	
1.	DC Tube light 12VDC, clamp type	TL 1	642/-	Least Price plus Courier plus 18% = MRP
2.	DC Tube light 12VDC, side clamp type	TL 2	642/-	
3.	DC Tube light 1Foot, 24VDC, Back clamp type, 7 watt	TL 3	642/-	
4.	DC Tube light 1Foot, 24VDC, side clamp type, 7 watt	TL 4	642/-	
5.	DC Tube light 1Foot, 24VDC, 12 watt, back clamp type	TL 5	642/-	
6.	DC Tube light 1Foot, 24VDC, 12 watt, side clamp type	TL 6	642/-	
7.	DC Tube light 1Foot, 10-30 VDC, 9 watt with wire and side clamp	TL 7	1250/-	
8.	DC Tube light 1Foot, 110 VDC, 12 watt back clamp type	TL 8	642/-	
9.	DC Tube light 1Foot, 110 VDC, 12 watt side clamp type	TL 9	642/-	
10.	DC Tube light 1Foot, 24 VDC, 12 watt, bicolor, back clamp type	TL 10	1430/-	
11.	DC Tube light 1Foot, 24 VDC, 12 watt, Tricolor, back clamp type	TL 11	1962/-	
12.	DC Tube light 150mm, 48VDC, back clamp type	TL 12	642/-	
13.	DC Tube light 2 Feet, 24VDC, 24Watt, back clamp type	TL 13	928/-	
14.	DC Tube light 2 Feet, 24VDC, 24Watt, side clamp type	TL 14	928/-	
15.	DC Tube light 48VDC, 20 watt, back clamp type	TL 15	928/-	<p align="center">Manufactured by:- Steam Airetric Controls</p>
16.	DC Tube light 110VDC, 24 watt, back clamp type	TL 16	928/-	
17.	DC Tube light 220VDC, 18 watt, back clamp type	TL 17	928/-	
18.	DC Tube light, 850mm - Tricolor, 24VDC	TL 18	4000/-	



Emergency Lighting

Sr. No.	Name of Product	Code No. SKU	Least Price	
1.	Mobilight	EM 1	1272/-	Least Price plus Courier plus 18% = MRP
2.	Panel Light Emergency, Backup	EM 2	2500/-	
3.	Emergency Flood light 20W, Backup	EM 3	5500/-	
4.	Emergency store, warehouse, light, Backup, With Motion Sensor	EM 4	9500/-	
5.	Emergency Tubelight 6", Backup	EM 5	1000/-	
6.	Emergency Tubelight 1 Foot, Backup - 2 Hrs	EM 6	4430/-	
7.	Emergency Tubelight 2 Feet, Backup - 1 Hrs	EM 7	5715/-	

**Manufactured by:-
Steam Airetric Controls**

